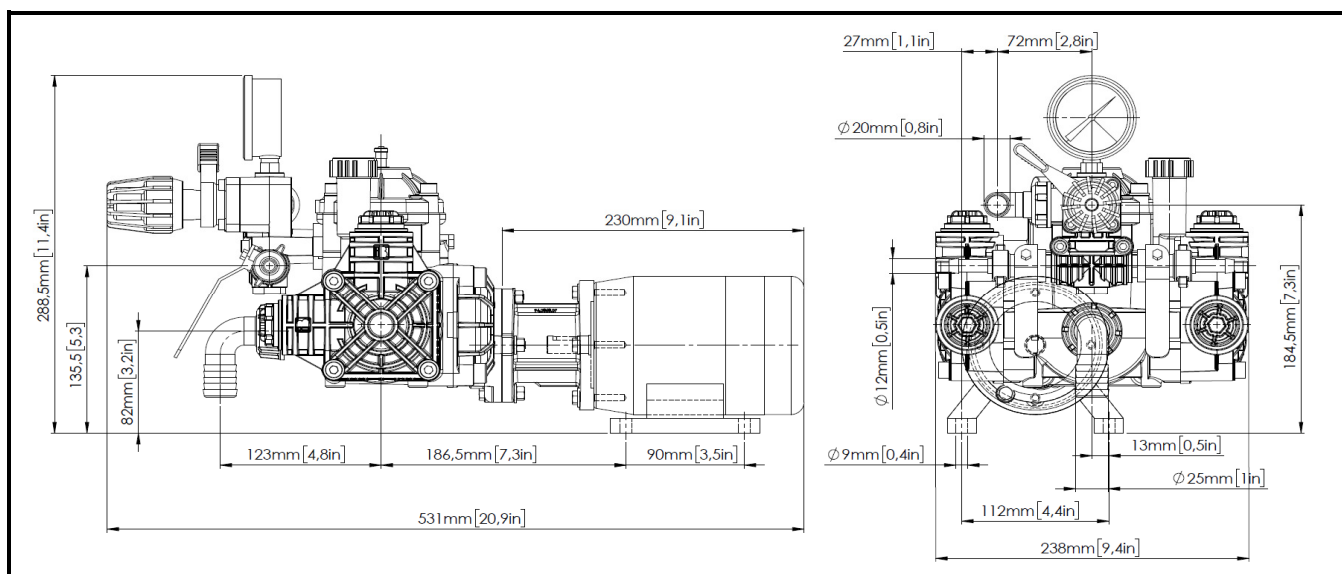




DIMENSIONI D'INGOMBRO - OVERALL DIMENSIONS



| COPPIA DI SERRAGGIO - TORQUE CHART                          |      |     |     |        |  |
|---|------|-----|-----|--------|--|
| CODICE - CODE   | Q.TY | POS | N·m | Lbr.ft |  |
| 86.2160.00.2  | 4    | 25  | 10  | 7,4    |  |
| 86.2900.00.2  | 8    | 22  | 10  | 7,4    |  |
| 86.1606.00.2  | 1    | 12  | 5   | 3,7    |  |
| 86.2945.00.2  | 2    | 38  | 10  | 7,4    |  |
| 86.2951.00.2  | 2    | 10  | 10  | 7,4    |  |
| 86.3300.00.2  | 4    | 44  | 40  | 29,5   |  |
| 86.2301.00.2  | 2    | 53  | 10  | 7,4    |  |
| 83.8012.00.2  | 1    | 56  | 10  | 7,4    |  |
| 81.4545.00.2  | 3-5  | 47  | 10  | 7,4    |  |
| Tolleranza di serraggio - Tolerance on torque value: 0/-10% |      |     |     |        |  |

| INFORMAZIONI UTILI<br>USEFUL INFORMATION  |       |        |         |         |
|---|-------|--------|---------|---------|
| LUBRIFICANTE - LUBRICANT:   |       |        |         |         |
| <b>POMPA - PUMP:</b><br>OLIO MOTORE O SEMIDRAULICO SAE 30<br>MOTOR OIL OR SEMI-HYDRAULIC OIL SAE 30 |       |        |         |         |
| PRESSIONE ACCUMULATORE<br>ACCUMULATOR PRESSURE  |       |        |         |         |
| PRESSIONE DI LAVORO - OPERATING PRESSURE  | 2 ÷ 5 | 5 ÷ 10 | 10 ÷ 20 | 20 ÷ 50 |
| ACCUMULATORE ACCUMULATOR  | 2     | 2 ÷ 5  | 5 ÷ 7   | 6 ÷ 8   |

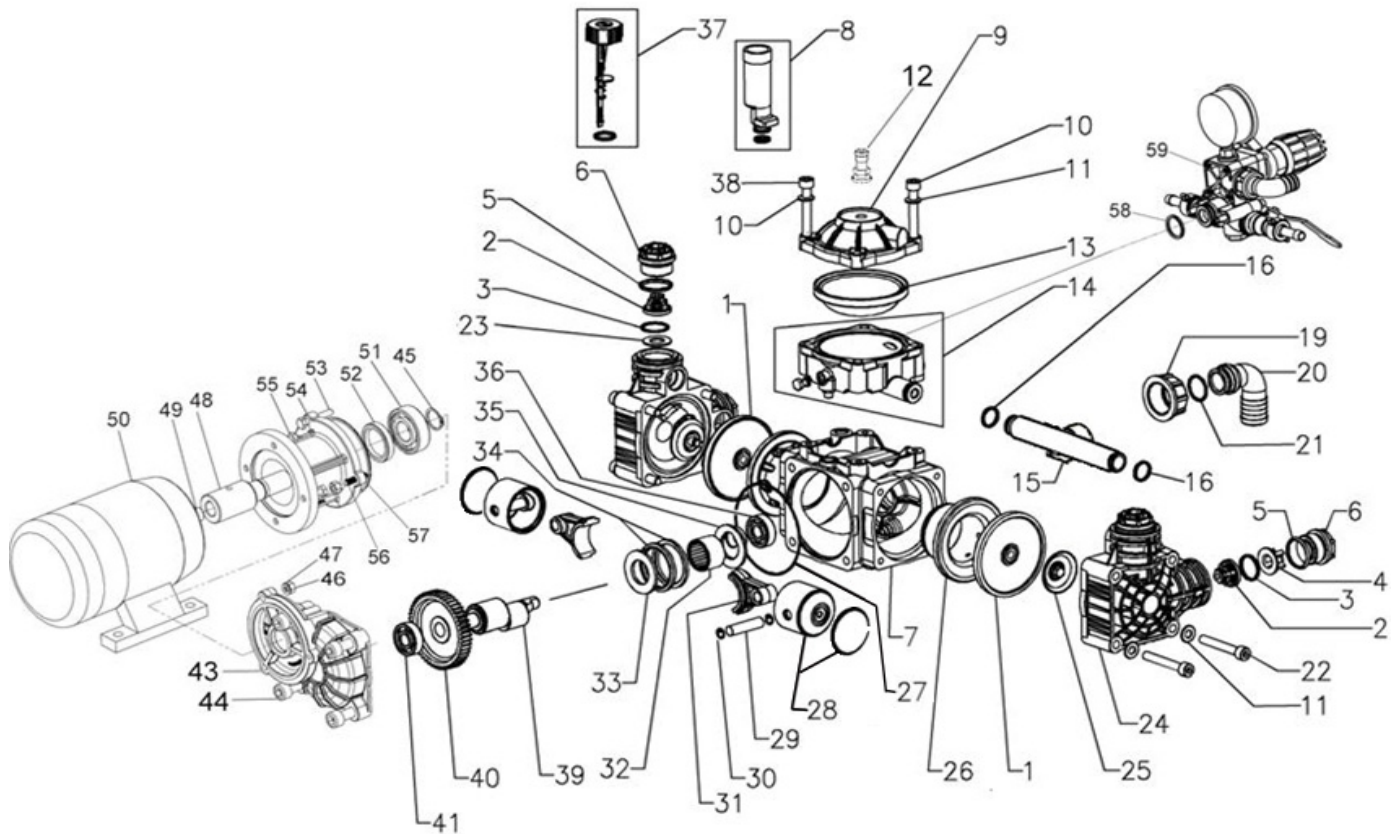
### KIT MEMBRANE - DIAPHRAGMS KIT

| KIT                                      | BUNA - N |  |  | VITON       |  |  |  |  | PRE-SET DESMOPAN |  |  |  |  | PRE-SET DURAMAX |  |  |  |  |
|--|----------|--|--|-------------|--|--|--|--|------------------|--|--|--|--|-----------------|--|--|--|--|
| POSIZIONE ESPLOSO<br>POSITION NUMBER     | 1 18 16  |  |  | 1 13 16 3 5 |  |  |  |  | 1 13 16 3 5      |  |  |  |  | 1 13 16 3 5     |  |  |  |  |
| QUANTITA' NEL KIT<br>QUANTITIES INCLUDED | 2 1 4    |  |  | 2 1 4 4 4   |  |  |  |  | 2 1 4 4 4        |  |  |  |  | 2 1 4 4 4       |  |  |  |  |

### KIT POMPA/KIT VALVOLE - PUMP KIT/VALVES KIT

| KIT                                      | KIT POMPA<br>PUMP KIT |  |  |  |  |  |  | KIT VALVOLE<br>VALVE KIT |  |  |  |  |  |  |
|--|-----------------------|--|--|--|--|--|--|--------------------------|--|--|--|--|--|--|
| POSIZIONE ESPLOSO<br>POSITION NUMBER     | 16 58 27 57 / / /     |  |  |  |  |  |  | 2 3 4 5                  |  |  |  |  |  |  |
| QUANTITA' NEL KIT<br>QUANTITIES INCLUDED | 4 1 1 1 4 1 1         |  |  |  |  |  |  | 4 4 2 4                  |  |  |  |  |  |  |

# POLY 2020.1 HP 12VDC



| POS. | CODICE<br>PART NO.<br>REF. | DENOMINAZIONE - DESCRIPTION -<br>DESCRIPTION | Q.TY | POS. | CODICE<br>PART NO.<br>REF. | DENOMINAZIONE - DESCRIPTION -<br>DESCRIPTION | Q.TY |
|------|----------------------------|--|------|------|----------------------------|--|------|
| 1    | 94.0040.31.2               | PISTON DIAPHRAGM                             | 2    | 29   | 85.2006.00.2               | PISTON PIN                                   | 2    |
| 1    | 94.0042.00.2               | PRE-SET DESMOPAN PISTON DIAPHRAGM            | 2    | 30   | 80.0003.00.2               | SNAP RING DIA.10                             | 4    |
| 1    | 94.0042.00.2DS             | PRE-SET DURAMAX PISTON DIAPHRAGM             | 2    | 31   | 94.0008.09.2               | CONROD                                       | 2    |
| 1    | 94.0040.33.2               | VITON PISTON DIAPHRAGM                       | 2    | 32   | 81.2688.00.2               | BEARING                                      | 1    |
| 2    | 03.9821.97.3               | VALVE ASSY                                   | 4    | 33   | 94.0027.32.2               | SPACER                                       | 1    |
| 3    | 80.3200.50.2               | O-RING D.2,62X22,22                          | 4    | 34   | 94.0047.76.2               | CONROD RING                                  | 2    |
| 4    | 94.0389.32.2               | SPACER INLET VALVE                           | 2    | 35   | 94.0392.32.2               | SHAFT SPACER                                 | 1    |
| 5    | 80.3205.55.2               | O-RING D.2,62X26,65                          | 4    | 36   | 81.2522.00.2               | BALL BEARING                                 | 1    |
| 6    | 94.0419.32.2               | CAP  | 4    | 37   | 94.9855.97.3               | KIT OIL INDICATOR                            | 1    |
| 7    | 94.0301.09.2               | CRANKCASE                                    | 1    | 38   | 86.2945.00.2               | SCREW M 8X60 UNI 5931                        | 2    |
| 8    | 94.9866.97.3               | KIT OIL FILLER                               | 1    | 39   | 94.0384.26.2               | SHAFT POLY 2030 RT4.1                        | 1    |
| 9    | 94.0003.09.2               | DAMPER COVER                                 | 1    | 40   | 94.0400.42.2               | GEAR Z=48                                    | 1    |
| 10   | 86.2951.00.2               | SCREW M8X65 UNI5931                          | 2    | 41   | 81.2522.00.2               | BALL BEARING                                 | 1    |
| 11   | 84.3685.00.2               | WASHER D.8,2X15X1,5                          | 12   | 43   | 94.0383.03.0               | CRANKCASE                                    | 1    |
| 12   | 86.1606.00.2               | AIR VALVE                                    | 1    | 44   | 86.3300.00.2               | SCREW TCEI M10x30                            | 4    |
| 13   | 94.0041.31.2               | DAMPER DIAPHRAGM                             | 1    | 45   | 80.1149.00.2               | RING DIA.20                                  | 1    |
| 14   | 94.9924.97.3               | LOWER DAMPER BODY (FOR KARIN)                | 1    | 46   | 84.3585.00.2               | WASHER D.6                                   | 7    |
| 14   | 94.0316.32.2               | LOWER DAMPER BODY (FOR PBP)                  | 1    | 47   | 81.4545.00.2               | NUT M6                                       | 3    |
| 15   | 94.0421.32.2               | INLET MANIFOLD                               | 1    | 48   | 94.0409.42.2               | PINION Z=9 D.14                              | 1    |
| 16   | 80.3181.10.2               | O-RING D.2,62X15,54                          | 4    | 49   | 80.6443.00.2               | TAB 5X5X20                                   | 1    |
| 19   | 82.0045.50.2               | WING NUT G.1                                 | 1    | 50   | 83.2008.50.2               | EL. MOTOR 12VDC 600W                         | 1    |
| 20   | 84.0526.00.2               | SUCTION CONNECTOR D.25 A 90°                 | 1    | 51   | 81.2637.00.2               | BALL BEARING                                 | 1    |
| 21   | 80.3195.50.2               | O-RING D.2,62X20,29                          | 1    | 52   | 80.2117.00.2               | OIL SEAL                                     | 1    |
| 22   | 86.2900.00.2               | SCREW TCEI M8X55                             | 8    | 53   | 86.2301.00.2               | SCREW TE M6X35                               | 2    |
| 23   | 94.0397.68.2               | WASHER                                       | 2    | 54   | 94.0368.07.0               | FLANGE                                       | 1    |
| 24   | 94.0390.32.2               | PUMP HEAD                                    | 2    | 55   | 86.2160.00.2               | SCREW TE M6X20                               | 4    |
| 25   | 03.0021.97.3               | KIT DIAPHRAGM WASHER/SCREW AISI 316          | 2    | 56   | 83.8012.00.2               | SCREW M6X18                                  | 1    |
| 26   | 94.0007.01.2               | PISTON SLEEVE                                | 2    | 57   | 80.3210.64.2               | OR 2,62X75,87                                | 1    |
| 27   | 80.3080.90.2               | O-RING 1,78X82,27                            | 1    | 58   | 80.3218.00.2               | OR 3,00X22                                   | 1    |
| 28   | 94.0117.09.3               | PISTON WITH PISTON RING                      | 2    | 59   | 24.4011.97.3               | VRP KARIN 20BAR                              | 1    |