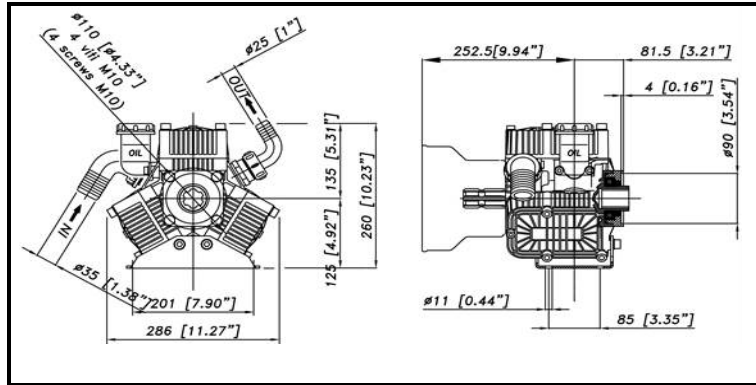
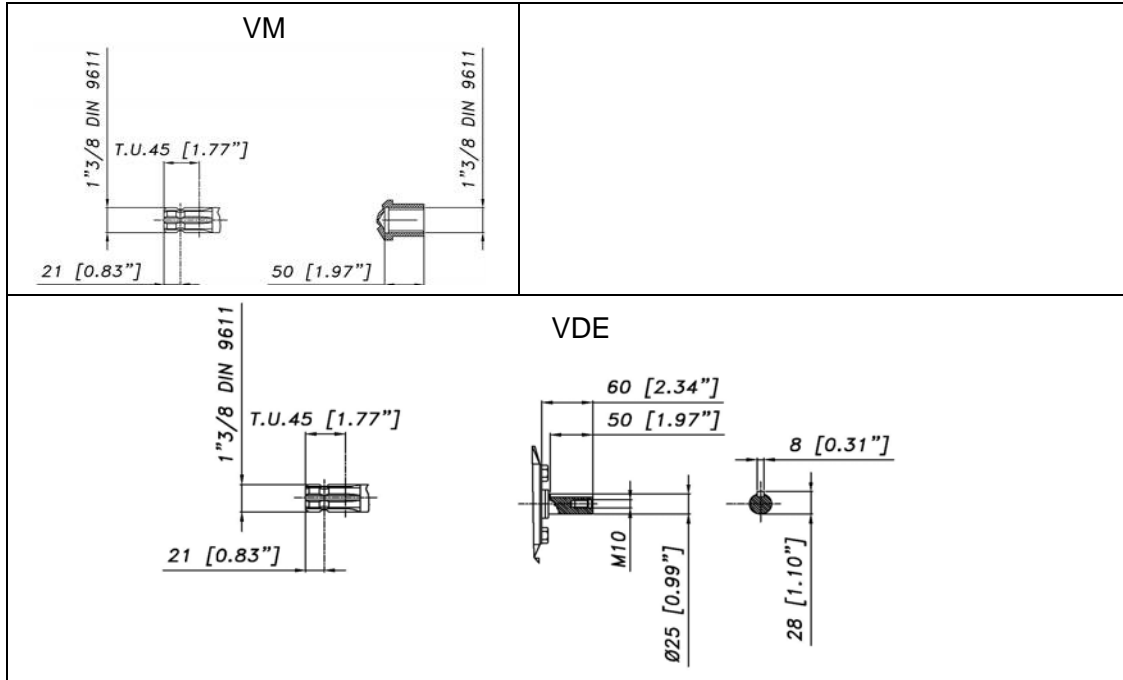


# POLY 2073 VM (1"3/8 M-F) - VDE

## DIMENSIONI D'INGOMBRO - OVERALL DIMENSIONS



## ALBERO POMPA - PUMP SHAFT



## COPPIA DI SERRAGGIO - TORQUE CHART

CODICE - CODE	Q.TY	POS	N-m	Lbr.ft
63.0018.51.2	3	33	25	18.5
83.5089.00.2	1	41	20	14.8
85.2585.00.2	1	50	5	3.7
86.2684.00.2	2	22	5	3.7
86.3001.05.2	3	36	10	7.4
86.3187.05.2	4	31	22	16.3
86.3265.50.2	3	17	44	32.5
86.3694.65.2	1	75	40	29.5
86.3562.05.2	12	35	30	22

Tolleranza di serraggio: 0/-10%  
Tolerance on torque value:

## INFORMAZIONI UTILI USEFUL INFORMATION

LUBRIFICANTE - LUBRICANT:  
OLIO MOTORE O SEMIDRAULICO SAE 30  
MOTOR OIL OR SEMI-HYDRAULIC OIL SAE 30

PRESSIONE ACCUMULATORE  
ACCUMULATOR PRESSURE

PRESSIONE DI LAVORO - OPERATING PRESSURE	2 ÷ 5	5 ÷ 10	10 ÷ 20	20 ÷ 50
ACCUMULATORE ACCUMULATOR	/	/	/	/

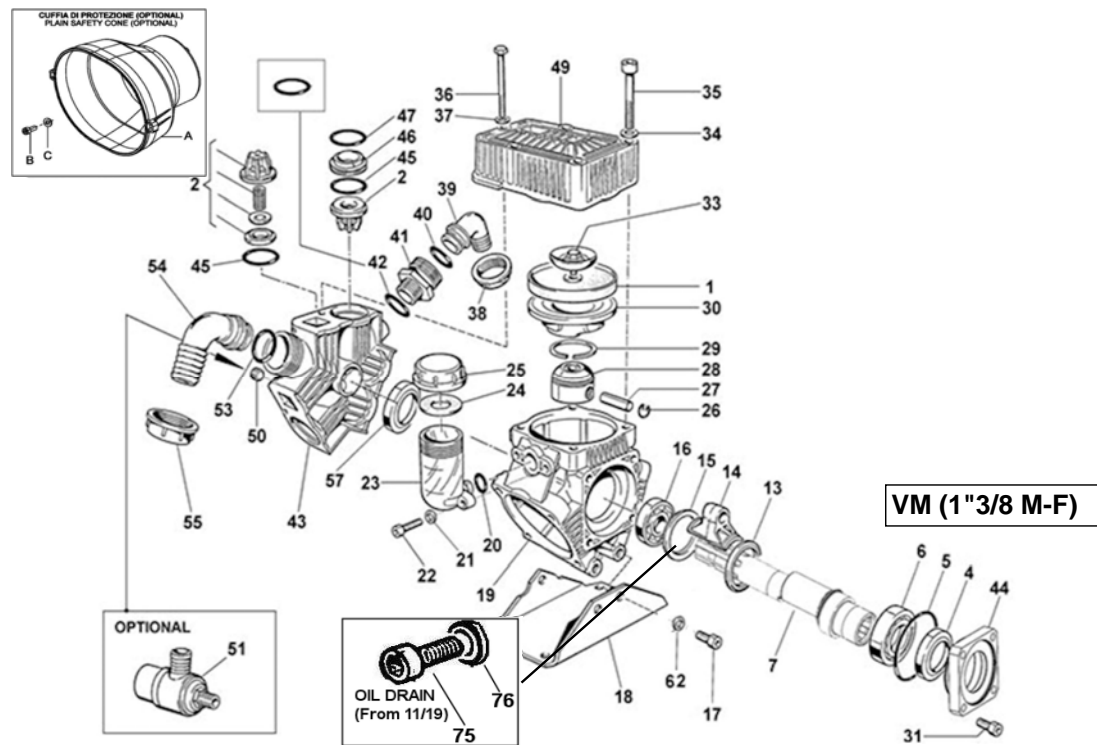
## KIT MEMBRANE - DIAPHRAGMS KIT

KIT	63.9871.97.3	BUNA - N			63.9873.97.3	PRE-SET DESMOPAN			63.9826.97.3	VITON				63.9825.97.3	PENTAX			63.9873.97.3DS	PRE-SET DURAMAX		
POSIZIONE ESPLOSO POSITION NUMBER		1	45	47		1	45	47		1	45	47	42		1	45	47		1	45	47
QUANTITA' NEL KIT QUANTITIES INCLUDED		3	6	4		3	6	4		3	6	4	1		3	6	4		3	6	4

## KIT POMPA/KIT VALVOLE - PUMP KIT/VALVES KIT

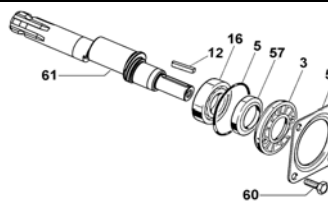
KIT	63.9879.97.3	KIT POMPA PUMP KIT					63.9872.97.3	VALVOLE INOX 303			63.9906.97.3	VALVOLE INOX 316 VALVES KIT 316		
POSIZIONE ESPLOSO POSITION NUMBER		5	4	45	47	57		2	45	47		2	45	47
QUANTITA' NEL KIT QUANTITIES INCLUDED		1	1	6	4	1		6	6	4		6	6	4

# POLY 2073 VM (1"3/8 M-F) - VDE



## VERSIONI

### VDE (1"3/8 -D.25 M-M)



POS.	CODICE PART NO. REF.	DENOMINAZIONE - DESCRIPTION - DESCRIPTION	Q.TY	POS.	CODICE PART NO. REF.	DENOMINAZIONE - DESCRIPTION - DESCRIPTION	Q.TY
1	95.0040.31.2	BUNA - N PISTON DIAPHRAGM	3	36	86.3001.05.2	BOLT M8x75 UNI 5931	3
1	95.0040.33.2	VITON PISTON DIAPHRAGM	3	37	84.3697.00.2	WASHER DIA.8.4x18x2	3
1	95.0040.00.ADS	PRE-SET DURAMAX PISTON DIAPHRAGM	3	38	82.0067.50.2	WING NUT G.1"	1
1	95.0040.00.A	PRE-SET DESMOPAN PISTON DIAPHRAGM	3	39	84.0542.40.2	90° ELBOW CONNECTOR DIA.25-1"	1
1	95.0040.36.2	HPS PISTON DIAPHRAGM	3	40	80.3219.05.2	O-RING DIA.2.62x20.24 VITON	1
2	28.9905.97.3	S.S. AISI 316 VALVE ASSY (STD.)	6	41	83.5089.50.2	NIPPLES G.1"-G.1"1/4	1
2	28.9809.97.3	S.S. AISI 303 VALVE ASSY (OPT.)	6	42	80.3218.50.2	O-RING DIA.3x22 VITON	1
2	63.9800.97.3	POLYPROP. VALVE ASSY (OPT.)	6	43	63.0110.32.2	MANIFOLD	1
3	53.0007.32.2	HOUSING "VDE"	1	44	63.0119.54.2	FLANGE "VM"	1
4	80.2191.00.2	OIL SEAL "VM"	1	45	80.3320.70.2	O-RING DIA.5x40 VITON	6
5	80.3310.00.2	O-RING DIA.4.0x82	1	46	28.0229.32.2	VALVE ASSY SPACER	4
6	81.2933.00.2	BEARING 45X75X16	1	47	80.3219.90.2	O-RING DIA.3x39 VITON	4
7	63.0118.26.2	CRANKSAFT "VM"	1	49	63.0022.32.2	HEAD	3
12	80.6540.00.2	TAB 8x7x45 UNI 6604 "VDE"	1	50	85.2585.00.2	CAP G.3/8	1
13	26.0047.76.2	CIRCLIP	1	51	24.3015.97.3	SAFETY VALVE 15 BAR (OPT.)	1
14	23.0005.09.2	LIGHT ALLOY CONROD	3	53	80.3219.15.2	O-RING DIA. 3x30 VITON	1
14	23.0045.11.2	BRONZE CONROD (OPT.)	3	54	84.0570.00.2	90° ELBOW CONNECTOR DIA.35-1,37"	1
15	63.0114.76.2	RING	1	54	84.0561.00.2	90° ELBOW CONNECTOR DIA.30-1,18" (OPT.)	1
16	81.2837.00.2	BEARING 35X62X14 "VM"	1	54	84.0566.00.2	90° ELBOW CONNECTOR DIA.32-1,25" (OPT.)	1
16	81.2837.00.2	BEARING 35X62X14 "VDE"	2	54	84.0571.00.2	90° ELBOW CONNECTOR DIA.38-1,49" (OPT.)	1
17	86.3265.50.2	BOLT M10x25 UNI 5931	3	54	84.0591.00.2	90° ELBOW CONNECTOR DIA.40-1,57" (OPT.)	1
18	63.0006.61.2	MOUNTING RAIL	1	55	82.0070.00.2	WING NUT G.1"1/2	1
19	63.0111.09.2	CRANKCASE VM - VDE	1	57	80.2143.10.2	OIL SEAL	1
20	80.3180.00.2	O-RING DIA.2.62x15.08	1	59	17.0016.61.2	FLANGE "VDE"	1
21	84.3685.40.2	WASHER DIA.8.2x15x1.5	2	60	86.3187.05.2	BOLT M10x18 UNI 5931 "VDE"	4
22	86.2684.00.2	BOLT M8x25 UNI 5931	2	61	63.0113.26.2	CRANKSAFT "VDE"	1
23	23.0008.32.2	OIL FILLER	1	62	84.3760.00.2	SCHNORR WASHER 10,5x16x1	3
24	82.4120.00.2	GASKET DIA.19x45x1.5 (before 08/2020)	1	75	86.3694.65.2	SCREW M12x20 UNI5931	1
24	23.0097.31.2	OIL FILLER MEMBRANE (from 09/2020)	1	76	82.4066.00.2	GASKET DIA.13,2x17x1 COPPER	1
25	85.2750.00.2	OIL FILLER CAP (before 08/2020)	1				
25	85.2750.00.2A	OIL FILLER CAP (from 09/2020)	1				
26	80.0021.00.2	RING DIA.15	6				
27	85.2006.70.2	PISTON PIN DIA.15x46	3				
28	63.0014.09.2	PISTON	3				
29	81.8504.50.2	PISTON RING	3				
30	63.0015.01.2	PISTON SLEEVE	3				
31	86.3300.50.2	BOLT M10X30 UNI 5931 "VM"	4				
33	63.9801.97.3	KIT SCREW/DISK INOX	3				
34	84.3805.00.2	WASHER DIA.10.5x21x2	12				
35	86.3562.05.2	BOLT M10x70 UNI 5931	12				
				<b>SAFETY CONE REAR SIDE (OPTIONAL)</b>			
				A	31.1799.32.2	PLAIN SAFETY CONE	1
				B	86.1843.00.2	BOLT D.4.8x16 UNI 6954	3
				C	84.3559.80.2	WASHER DIA.5,3x10x1 UNI 6592	3