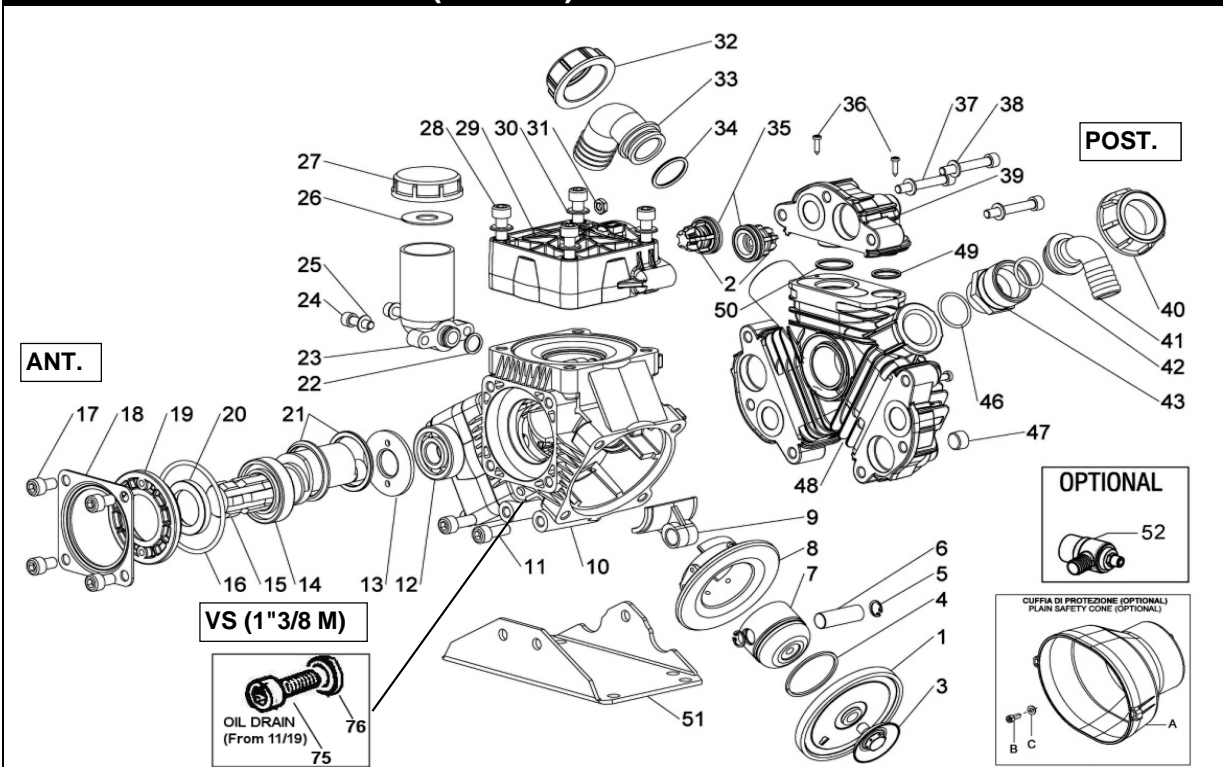
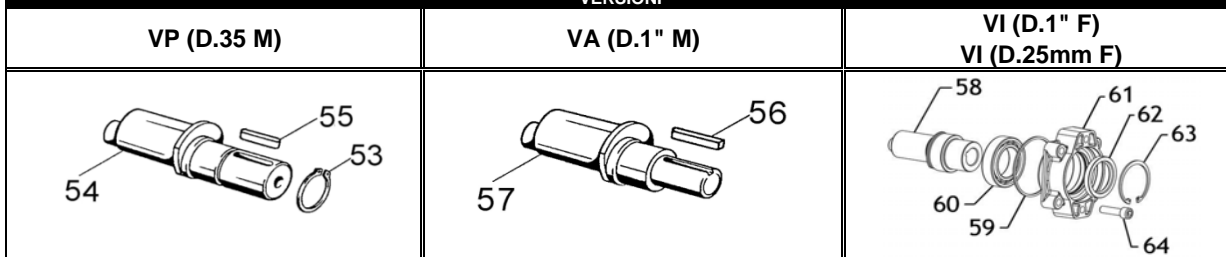


POLY 2085 PREMIUM VS (1"3/8 M)



VERSIONI



| POS. | CODICE PART NO. REF. | DENOMINAZIONE - DESCRIPTION - DESCRIPTION | Q.TY | POS. | CODICE PART NO. REF. | DENOMINAZIONE - DESCRIPTION - DESCRIPTION | Q.TY |
|--|----------------------|---|------|---|----------------------|---|------|
| 1 | 95.0040.31.2 | BUNA PISTON DIAPHRAGM | 3 | 32 | 82.0070.00.2 | WING NUT G.1 1/2 | 1 |
| 1 | 95.0040.33.2 | VITON PISTON DIAPHRAGM | 3 | 33 | 84.0570.00.2 | 90° ELBOW CONNECTOR DIA.35-1,37" | 1 |
| 1 | 95.0040.00.A | PRE-SET DESMOPAN PISTON DIAPHRAGM | 3 | 33 | 84.0561.00.2 | 90° ELBOW CONNECTOR DIA.30-1,18" (OPT.) | 1 |
| 1 | 95.0040.00.ADS | PRE-SET DURAMAX PISTON DIAPHRAGM | 3 | 33 | 84.0566.00.2 | 90° ELBOW CONNECTOR DIA.2-1,25" (OPT.) | 1 |
| 1 | 95.0040.36.2 | HPS PISTON DIAPHRAGM | 3 | 33 | 84.0571.00.2 | 90° ELBOW CONNECTOR DIA.38-1,49" (OPT.) | 1 |
| 2 | 23.9906.97.3 | VALVE ASSY | 6 | 33 | 84.0591.00.2 | 90° ELBOW CONNECTOR DIA.40-1,57" (OPT.) | 1 |
| 3 | 63.9808.97.3 | KIT SCREW/DISK | 3 | 34 | 80.3219.15.2 | O-RING DIA.3,0x30 VITON | 1 |
| 4 | 81.8504.50.2 | PISTON RING | 3 | 35 | 80.3247.60.2 | O-RING DIA.3,53X28,17 | 6 |
| 5 | 80.0021.00.2 | RING D.15 | 6 | 36 | 86.1820.76.2 | SCREW DIA.3,5X16 | 6 |
| 6 | 85.2006.70.2 | PISTON PIND.15x46 | 3 | 37 | 86.2914.00.2 | SCREW M8X55 UNI5931 | 9 |
| 7 | 63.0132.09.2 | PISTON | 3 | 38 | 84.3685.40.2 | WASHER DIA.8,2x15x1,5 | 9 |
| 8 | 63.0015.01.2 | PISTON SLEEVE | 3 | 39 | 63.0129.32.2 | VALVES CONNECTOR 3/8" | 3 |
| 9 | 23.0005.09.2 | LIGHT ALLOY CONROD | 3 | 40 | 82.0067.50.2 | WING NUT G.1 1/4 | 1 |
| 9 | 23.0045.11.2 | BRONZE CONROD (OPTIONAL) | 3 | 41 | 84.0542.40.2 | 90° ELBOW CONNECTOR DIA.25-1" | 1 |
| 10 | 63.0001.09.2 | CRANKCASE | 1 | 42 | 80.3219.05.2 | O-RING 3,0x25 VITON | 1 |
| 11 | 86.3265.50.2 | SCREW M10x25 UNI5931 | 3 | 43 | 83.5089.50.2 | NIPPLESG.1"-G.1 1/4 | 1 |
| 12 | 81.2646.00.2 | BEARING DIA.20X52X15 | 1 | 46 | 80.3207.50.2 | O-RING 2.62x29.82 | 1 |
| 13 | 95.0097.61.2 | CRANKSHAFT SPACER | 1 | 47 | 85.2585.00.2 | CAP G.3/8 | 3 |
| 14 | 81.2837.00.2 | BEARING DIA.35X62X14 | 1 | 48 | 63.0130.32.2 | MANIFOLD | 1 |
| 15 | 63.0009.26.2 | CRANKSHAFT "VS" | 1 | 49 | 80.3217.45.2 | O-RING DIA.3X18 | 3 |
| 16 | 80.3310.00.2 | O-RING 4,0x82 | 1 | 50 | 80.3206.50.2 | O-RING DIA. 2.62X28,25 | 3 |
| 17 | 86.3187.05.2 | SCREW M10x16 UNI5931 | 4 | 51 | 63.0135.61.2 | MOUNTING RAIL | 1 |
| 18 | 17.0016.61.2 | COVER | 1 | 52 | 24.3016.97.3 | SAFETY VALVE 15BAR (OPTIONAL) | 1 |
| 19 | 53.0007.32.2 | HOUSING | 1 | 53 | 80.1264.00.2 | RING D.35 | 1 |
| 20 | 80.2143.10.2 | OIL SEAL DIA.35X52X7 | 1 | 54 | 63.0011.26.2 | CRANKSHAFT "VP" | 1 |
| 21 | 26.0047.76.2 | RING | 2 | 55 | 80.6578.00.2 | TAB 10x8x35 "VP" | 1 |
| 22 | 80.3180.00.2 | O-RING 2.62x15,08 | 1 | 56 | 63.0016.26.2 | CRANKSHAFT "VA" | 1 |
| 23 | 23.0008.32.2 | OIL FILLER | 1 | 57 | 80.6475.00.2 | TAB 6,36x6,36x40 "VA" | 1 |
| 24 | 86.2684.00.2 | SCREW M8x25 UNI5931 | 2 | 58 | 63.0127.26.2 | CRANKSHAFT "VI" D.1" | 1 |
| 25 | 84.3685.40.2 | WASHER D.8,2x15x1,5 | 2 | 58 | 63.0127.26.2A | CRANKSHAFT "VI" D.25mm | 1 |
| 26 | 82.4120.00.2 | GASGHET DIA.19x45x1,5 | 1 | 59 | 80.3287.00.2 | O-RING 3,53x82,14 | 1 |
| 27 | 85.2750.00.2 | OIL FILLER CAP | 1 | 60 | 81.2933.00.2 | BEARING 45X75X16 | 1 |
| 28 | 86.3562.05.2 | SCREW M10x70 UNI5931 12.9 | 12 | 61 | 63.0126.09.2 | BEARING COVER | 1 |
| 29 | 63.0128.32.2 | HEAD | 3 | 62 | 80.2191.10.2 | OIL SEAL "VI" | 1 |
| 30 | 84.3805.00.2 | SCREW D.10,5x21x2 | 12 | 63 | 80.1400.00.2 | RING D.35 | 1 |
| 31 | 81.4573.00.2 | NUT M8 UNI 5588 | 9 | 64 | 86.3348.05.2 | SCREW M10X35 | 4 |
| | | | | 75 | 86.3694.65.2 | SCREW M12x20 UNI5931 | 1 |
| | | | | 76 | 82.4066.00.2 | GASKET DIA.13,2x17x1 COPPER | 1 |
| CUFFIA DI PROTEZIONE LATO ANT. (OPTIONAL) | | | | CUFFIA DI PROTEZIONE LATO POST. (OPTIONAL) | | | |
| A | 31.1468.32.2 | PLAIN SAFETY CONE L=135 | 1 | A | 31.1468.32.2 | PLAIN SAFETY CONE L=135 | 1 |
| B | / | USE STANDARD SCREW OF PUMP | 4 | B | / | USE STANDARD SCREW OF PUMP | 3 |
| C | / | USE SPECIAL WASHER OF PLAIN SAFETY C. | 4 | C | / | USE STANDARD WASHER OF PUMP | 3 |