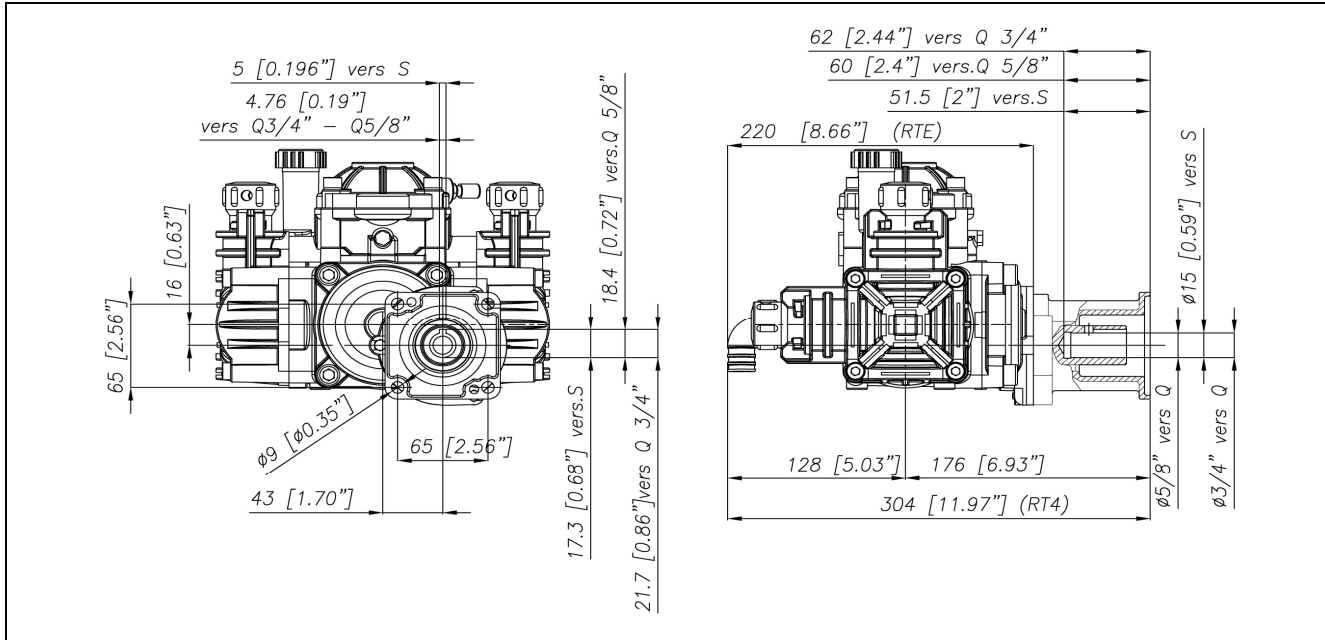
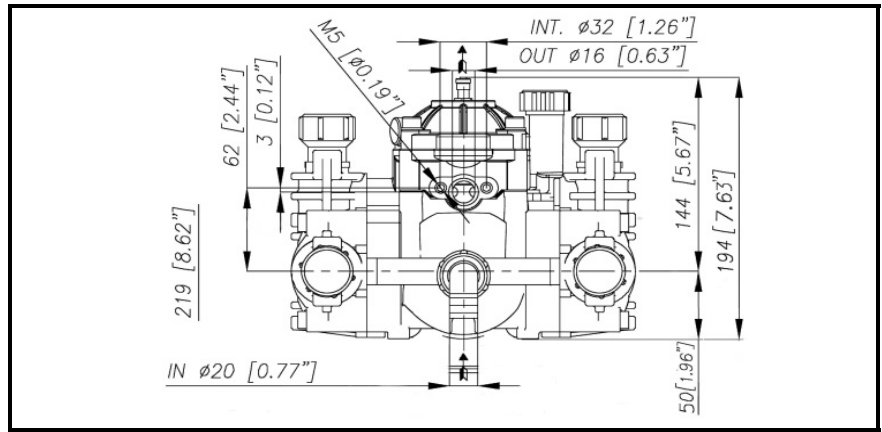




ALBERO POMPA - PUMP SHAFT



COPPIA DI SERRAGGIO - TORQUE CHART					
CODICE - CODE	Q.TY	POS	N-m	Lbr.ft	
86.2900.00.2	8	7	12	8,8	
03.0021.97.3	2	12	5(*)	3,7	
86.1605.00.2	1	17	5	3,7	
86.2945.00.2	2	21	10	7,4	
86.2951.00.2	2	24	10	7,4	
86.3300.00.2	4	36	40	29,5	
86.2301.00.2	2	47	10	7,4	
83.8012.00.2	1	52	10	7,4	
86.2260.00.2	2	53	10	7,4	
86.2108.00.2	2	56	10	7,4	
81.4545.00.2	3-5	61	10	7,4	
86.1948.00.2	1	72	6	4,4	
Tolleranza di serraggio - Tolerance on torque value:			0/-10%(*)		
Tolleranza generale - General tolerance:			0/-20%		

LUBRIFICANTE - LUBRICANT:				
POMPA - PUMP: OLIO MOTORE O SEMIDRAULICO SAE 30 MOTOR OIL OR SEMI-HYDRAULIC OIL SAE 30				
PRESSIONE ACCUMULATORE ACCUMULATOR PRESSURE				
PRESSIONE DI LAVORO - OPERATING PRESSURE	2 + 5	5 + 10	10 + 20	20 + 50
ACCUMULATORE ACCUMULATOR	2	2 + 5	5 + 7	6 + 8

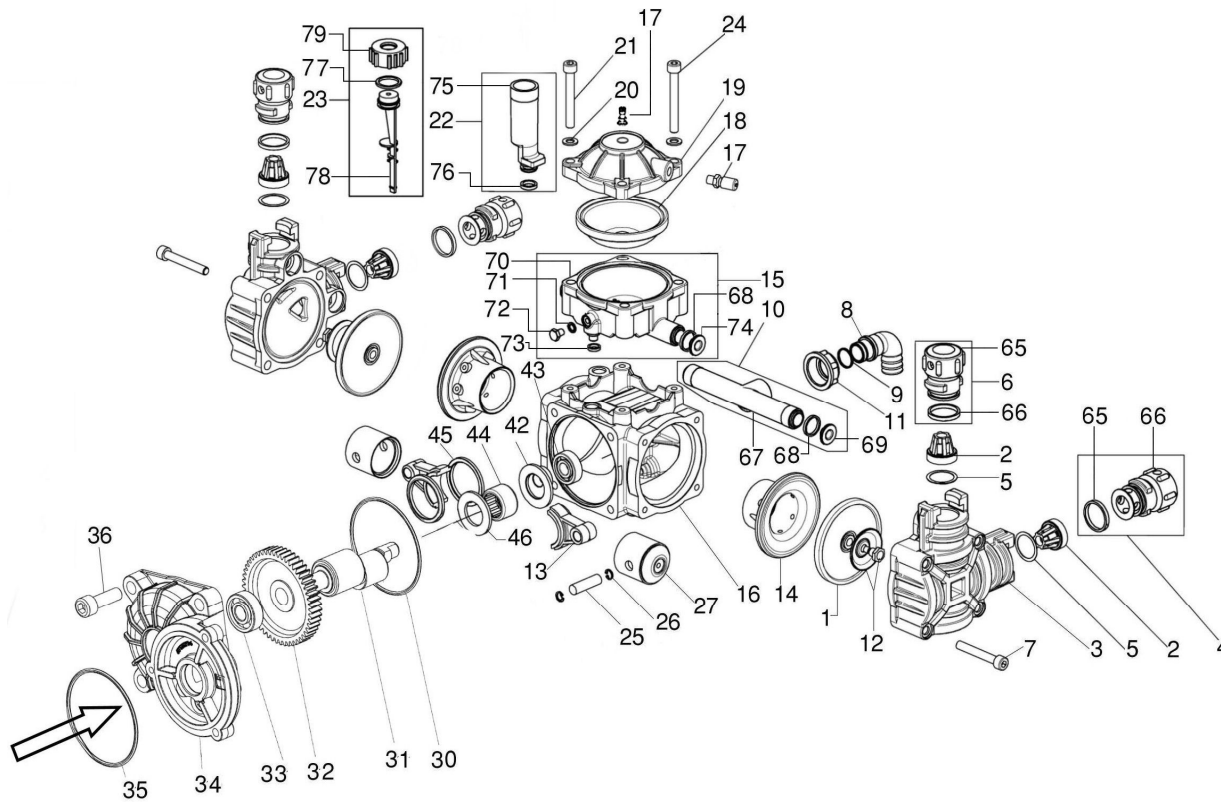
KIT MEMBRANE - DIAPHRAGMS KIT

KIT	BUNA - N			VITON				PRE-SET DESMOPAN				PRE-SET DURAMAX							
POSIZIONE ESPLOSO POSITION NUMBER	94.9871.97.3	1	18	68	94.9910.97.3	1	18	68	65	94.9917.97.3	1	18	65	68	94.9917.97.3DS	1	18	65	68
QUANTITA' NEL KIT QUANTITIES INCLUDED		2	1	4		2	1	4	4		2	1	4	4		2	1	4	4

KIT POMPAKIT VALVOLE - PUMP KIT/VALVES KIT

KIT	KIT POMPA PUMP KIT							KIT VALVOLE VALVE KIT			
POSIZIONE ESPLOSO POSITION NUMBER	94.9942.97.3	68	71	73	76	65	30	35	94.9888.97.3	2	5
QUANTITA' NEL KIT QUANTITIES INCLUDED		4	1	1	1	4	1	1		4	4

POLY 2025.1 LP RTE.1-RT4.1



VERSIONS		OPTIONAL	
RT4.1	RTE.1	SAFETY VALVE	

POS.	CODICE PART NO. REF.	DENOMINAZIONE - DESCRIPTION - DESCRIPTION	Q.TY	CONF. PACK.	POS.	CODICE PART NO. REF.	DENOMINAZIONE - DESCRIPTION - DESCRIPTION	Q.TY	CONF. PACK.
1	94.0040.31.2	PISTON DIAPHRAGM	2		63	24.3200.97.2	SAFETY VALVE 15BAR(OPTIONAL)	1	
1	94.0042.00.2DS	PRE-SET DURAMAX PISTON DIAPHRAGM(OPT.)	2		64	94.0339.32.2	SUCTION VALVE CAP BLUE	1	▲
1	94.0042.00.2	PRE-SET DEMPAN PISTON DIAPHRAGM(OPT.)	2		65	80.3200.50.2	O-RING	1	
1	94.0040.33.2	VITON PISTON DIAPHRAGM(OPT.)	2		66	94.0338.32.2	INLET VALVE CAP BLUE	1	
2	94.9828.97.3	VALVE ASSY	4		67	94.0014.32.2	MANIFOLD	1	▲
3	94.0302.32.2	PUMP HEAD	2		68	80.3181.10.2	O-RING	4	
4	94.9869.97.3	KIT INLET CAP	2		69	94.0306.32.2	SUCTION COLLECTOR BUSHING	2	
5	82.4154.50.2	GASKET	4	●	70	94.0316.32.2	LOWER DAMPER (X PBP)	1	●
6	94.9878.97.3	KIT OUTLET CAP	2		71	80.3049.00.2	O-RING	1	●
7	86.2900.00.2	SCREW [12Nm - 8.8lb-ft]	8	●	72	86.1948.00.2	SCREW [6Nm - 4.4lb-ft]	1	●
8	84.0521.00.2	SUCTION CONNECTOR DIA.20-0,78"	1		73	80.3170.00.2	O-RING	1	
9	80.3060.50.2	O-RING	1	●	74	80.3170.00.3	BUSHING	2	
10	94.9868.97.3	KIT INLET MANIFOLD	1		75	94.0307.32.2	OIL TANK	1	●
11	82.0042.10.2	WING NUT G.3/4	1	▲	76	80.3213.50.2	O-RING	1	●
12	03.0021.97.3	KIT DIAP. WASHER/SCR.INOX [5Nm - 3.7lb-ft(*)	2		77	80.3181.00.2	O-RING	1	
13	94.0008.09.2	CONROD	2		78	94.0353.32.2	OIL LEVEL DIP	1	
14	94.0015.01.2	PISTON SLEEVE	2		79	85.2698.00.2	CAP 3/4"	1	
15	94.9867.97.3	KIT DAMPER BODY	1						
16	94.0301.09.2	CRANKCASE	1		37	81.2631.00.2	BALL BEARING	1	
17	86.1606.00.2	AIR VALVE (FROM 05/2017) [5Nm - 3.7lb-ft]	1		47	86.2301.00.2	SCREW [10Nm - 7.4lb-ft]	2	●
18	94.0041.31.2	DAMPER DIAPHRAGM	1		48	94.0210.09.2	MOTOR FLANGE	1	
18	94.0041.33.2	VITON DAMPER DIAPHRAGM (OPT.)	1		49	94.0403.42.2A	PINION	1	
19	94.0003.09.2	DAMPER COVER	1		49	94.0401.42.2A	PINION	1	
20	84.3685.00.2	WASHER	4	●	49	94.0402.42.2A	PINION	1	
21	86.2945.00.2	SCREW [10Nm - 7.4lb-ft]	2	●	50	80.6436.00.2	TAB	1	▲
22	94.9866.97.3	KIT OIL FILLER	1		50	80.6445.00.2	TAB	1	▲
23	94.9855.97.3	KIT OIL INDICATOR	1		51	80.2117.50.2	OIL SEAL	1	
24	86.2951.00.2	SCREW [10Nm - 7.4lb-ft]	2	▲	52	83.8012.00.2	STUD [10Nm - 7.4lb-ft]	1	▲
25	85.2006.00.2	PISTON PIN	2		61	81.4545.00.2	NUT [10Nm - 7.4lb-ft]	3-5	●
26	80.0003.00.2	SNAP RING	4	●	62	84.3585.00.2	WASHER	5	●
27	94.0016.08.2	PISTON	2						
30	80.3080.90.2	O-RING	1	●	52	83.8012.00.2	STUD [10Nm - 7.4lb-ft]	1	▲
31	94.0384.26.2	SHAFT	1		53	86.2260.00.2	SCREW [10Nm - 7.4lb-ft]	2	●
32	94.0400.42.2	GEAR Z=48	1		54	80.2072.00.2	OIL SEAL	1	
33	81.2522.00.2	BALL BEARING	1		55	83.2081.70.2	ELECTRIC MOTOR 230V (Z=9)	1	
34	94.0383.09.2	CRANKCASE	1		55	83.2081.80.2	ELECTRIC MOTOR 400V (Z=9)	1	
35	80.3210.64.2	O-RING	1	●	56	86.2108.00.2	SCREW [10Nm - 7.4lb-ft]	2	●
36	86.3300.00.2	SCREW [40Nm - 29.5lb-ft]	4	●	57	31.1324.61.2	LEFT HALF HANDLE	1	
42	94.0026.32.2	SPACER	1		58	82.8410.00.2	KNOB	1	
43	81.2522.00.2	BALL BEARING	1		59	31.1325.61.2	RIGHT HALF HANDLE	1	
44	81.2688.00.2	BEARING	1		60	94.0404.61.2	BRACKET	1	
45	94.0047.76.2	CONROD RING	2		61	81.4545.00.2	NUT [10Nm - 7.4lb-ft]	3-5	●
46	94.0027.32.2	SPACER	1		62	84.3585.00.2	WASHER	5	●

Torque values are indicated between brackets []. General Tolerance on torque value: 0/-20% . Tolerance on torque value: 0/-10%(*)
 The components marked with the symbols are supplied in packs: ▲ = 12pcs. ● = 25pcs.